

EESB Parallel Wired Electronic Ballasts

Specifications Charts

EESB Series Electronic Sign Ballasts Minimum starting temperature is -20° F (-30° C).

For use with T12 HO, T8 HO, and Slimline Lamps 120 Volts, 50/60Hz

For 800mA T12/HO Lamps Standard								
No. of Lamps	Footage Min.	Footage Max	Catalog Number	Input Voltage	Max Input Amps	Max Input Watts	Open Circuit Voltage	Wiring Diagram
1	18"	8'	EESB-1808-1L	120V	0.85	100	800	1,7
1 to 3	4'	24'	EESB-424-13L	120V	1.50	180	750	3,9
1 to 6	8'	32'	EESB-832-16L	120V	2.40	282	800	4,10
1 to 4	10'	40'	EESB-1040-14L*	120V	2.70	328	850	5,11
2 to 6	10'	48'	EESB-1048-26L***	120V	3.00	355	800	6,12

For use with T12 HO, T8 HO, and Slimline Lamps 120/220/240/277 Volts, 50/60Hz

For 800mA T12/HO Lamps Standard								
No. of Lamps	Footage Min.	Footage Max	Catalog Number	Input Voltage	Max Input Amps	Max Input Watts	Open Circuit Voltage	Wiring Diagram
1 to 2	2'	16'	EESB-0216-12L 120-277V	120V	1.20	134	980	2-8
				208V	0.64	133		
				240V	0.58	135		
1 to 4	4'	32'	EESB-0432-14L 120-277V	120V	2.35	271	980	5-11
				208V	1.30	270		
				240V	1.18	271		
1 to 6	2'	50'	EESB-0250-16L 120-277V**	120V	1.10	272	980	6-12
				208V	1.96	404		
				240V	1.67	402		
2 to 6	10'	48'	EESB-1048-26L 120-277V*	120V	3.10	362	980	6-12
				208V	1.76	361		
				240V	1.54	361		
				277V	1.32	360		

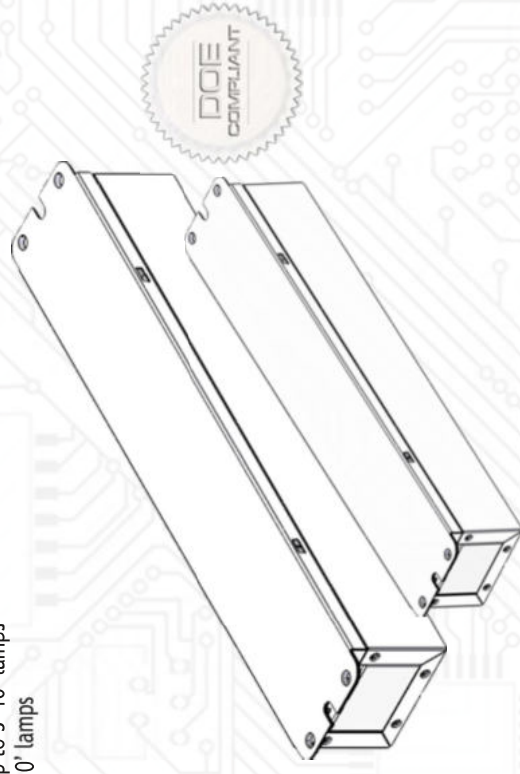
For use with T12 HO, T8 HO, T8 50K hours Long Life Lamps, and Slimline Lamps 120/220/240/277 Volts 50/60/Hz

For 315mA T8 Long Life Lamp								
No. of Lamps	Footage Min.	Footage Max	Catalog Number	Input Voltage	Max Input Amps	Max Input Watts	Open Circuit Voltage	Wiring Diagram
1 to 6	2'	48'	EESB-0250-16L 120-277V	120V	3.55	418	980	6-12
				208V	2.01	416		
				240V	1.76	416		
				277V	1.55	416		

For use with T12 HO, T8 HO, T8 18K hours Medium Life, and Slimline Lamps 120/220/240/277 Volts 50/60/Hz

For 375mA T8 HO Medium Life Lamps								
No. of Lamps	Footage Min.	Footage Max	Catalog Number	Input Voltage	Max Input Amps	Max Input Watts	Open Circuit Voltage	Wiring Diagram
1 to 2	2'	12'	EESB-0216-12L 120-277V	120V	1.10	124	980	2-8
				208V	0.61	124		
				240V	0.53	125		
1 to 4	4'	24'	EESB-0432-14L 120-277V	120V	2.25	247	980	5-11
				208V	1.19	248		
				240V	1.04	248		
1 to 6	2'	48'	EESB-0250-16L 120-277V	120V	1.00	249	980	6-12
				208V	3.65	427		
				240V	2.08	427		
2 to 6	10'	48'	EESB-1048-26L 120-277V*	120V	1.58	428	980	6-12
				208V	3.65	427		
				240V	1.82	428		
				277V	1.58	428		

*For use with up to 4 10' lamps
 **For use with up to 5 10' lamps
 ***DO NOT use 10' lamps



EESB Parallel Wired Electronic Ballasts

Fluorescent H.O. Lamp Holders

EESB Magnetic to Electronic Re-Wiring Diagrams

DIAGRAM 1

EESB-0216-12L

(2-LAMP MAGNETIC TO ELECTRONIC)

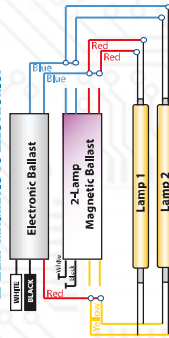


DIAGRAM 2

EESB-424-18L

(3-LAMP MAGNETIC TO ELECTRONIC)

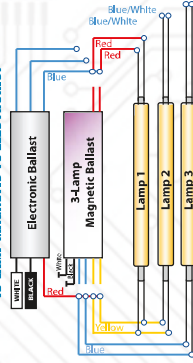


DIAGRAM 3

EESB-0432-14L & EESB-1040-14L

(4-LAMP MAGNETIC TO ELECTRONIC)

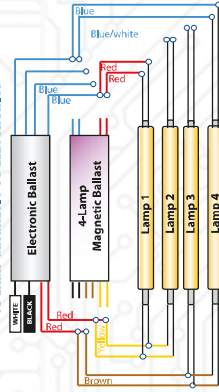
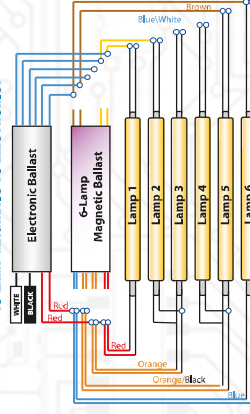


DIAGRAM 4

EESB-1048-26L/120-27W,

EESB-032-16L & EESB-0250-16L

(6-LAMP MAGNETIC TO ELECTRONIC)

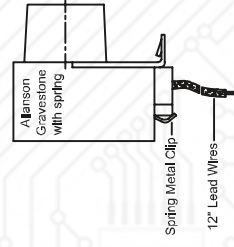


For a live demonstration, watch our
Magnetic to Electronic Replacement Video.

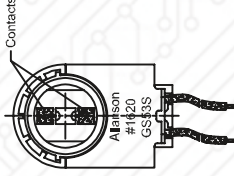


Visit www.allanson.com

Tombstone Lamp Holders

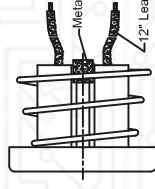


**Part#1620 with spring
Vertical Contacts**

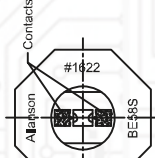


**Part#1621 w/o spring
Vertical Contacts**

Flush Mount Lamp Holders



**Part#1622
Vertical Contacts**



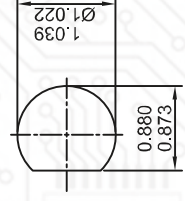
**Part#1623
Vertical Contacts**

Lamp holder Ratings: 660W, 600V / 1000V rating

Materials: GE® resins, Ni plated steels, stainless steels, "O" ring, and tin bronze contacts were used in the manufacturing of Allanson lamp holders. The 12" lead assemblies are stranded 18AWG tinned copper and have 1015/1032 UL ratings 221 °F (105 °C) and 1000V.

Mounting: High strength metal retaining clips ensure solid hold when installed per specifications.

Mounting "D" Hole:



cULus listed.
UL listed for use
in U.S.A and Canada.

